



Service Manual

Tumble dryer

Air Vent

AWZ 220

Model Version		Page
	AWZ 220	
	8575 220 10001	
	Technical data	2 - 3
	Spare part list	4
	Exploded view	5 - 6
	Wiring diagram	7
	Circuit diagram	8
	Program diagram	9

Technical data**Dimensions**

Height	85	cm
Width	59.5	cm
Depth	56	cm

Weight

Gross weight	33	kg
Net weight	31	kg

Surroundings temperature

Room temperature maximum	35	°C
Room temperature minimum	5	°C

Humidity

Relative humidity maximum	95	%
---------------------------	----	---

Power connection

Voltage	230	V
Frequency	50	Hz
Connected load	2.8	kW
Fuse	16	A

Drum data

Volume	104	l
Drum speed	56 ± 3	rpm
Airflow	120 - 160	m ³ /h

Capacity of laundry

Cotton max.	5	kg
Easy care max.	2.5	kg

Exhaust hose

Inner diameter	10	cm
Maxi.allowable length (with 2 bows)	4	m

Electrical components**Heating**

Type	Aluminium mass heating
Nominal voltage	230 +10%/ -15% V
Nominal power	2500 ± 5%W
Heating resistances:	
Connecting points	19.5 - 23 Ω

Thermostats**Caution:**

If one of the thermostats (TL, TH1.2) is defective, the whole heating element has to be changed for safety reason !



Therefore, the thermostats are not available as separate spare parts !

Safety thermostat (in heater) TL

Switch off temperature 298 - 10 °C

Fluff thermostat (in heater) TH 1.2

Switch off temperature 220 ± 7.5 °C

Exhausting thermostat (in bottom) TH 1.1

Switch on temperature 38 ± 5 °C

Switch off temperature 53 ± 4 °C

Timer

Type	Electromechanical Timer
	Eaton EC 4605
Nominal voltage	230 +10%/ -15% V
Frequency	50 Hz
Number of steps	60
Stop	01
Heating (138 min.)	02 - 53
Cool down (6 min.)	54 - 55
Anticreasing(12 min.)	56 - 59
Stop	60
Reversing cycle	2'- 6'- 2'- 80'
Ambient temperature	5 to 75 °C
Storage temperature	up to 85 °C

Technical data**Main- and blower motor**

Type	1 phase asynchronous	
Nominal voltage	230 +10%/ -15%	V
Frequency	50	Hz
Power consumption	295 ± 7%	W
Resistances of coils:		
Main coil (2-3)	24.7 ± 7%	Ω
Auxiliary coil (2-1)	25.6 ± 7%	Ω
Rated speed with 5 kg laundry and 100% rest humidity	2730	rpm
Capacitor	10 ± 7%	μ F

Radio interference filter

Type	ISKRA KPB 7325	
Voltage max.	275	V
Capacity	100 nFX1 + 2 x 22 nFY2 + 1MΩ	

Start/door switch**Start switch SST**

Nominal voltage	230 +10%/ -15%	V
Nominal current	16	A

Door switch SD

Nominal voltage	230 +10%/ -15%	V
Nominal current	16	A

Buzzer

type	Eichhoff E 2778	
Nominal voltage	230 +10%/ -15%	V
Resistance of coil	7 ± 15%	kΩ

Push buttons**Gentle switch SG**

Nominal voltage	230 +10%/ -15%	V
Nominal current	16	A

Spare part list

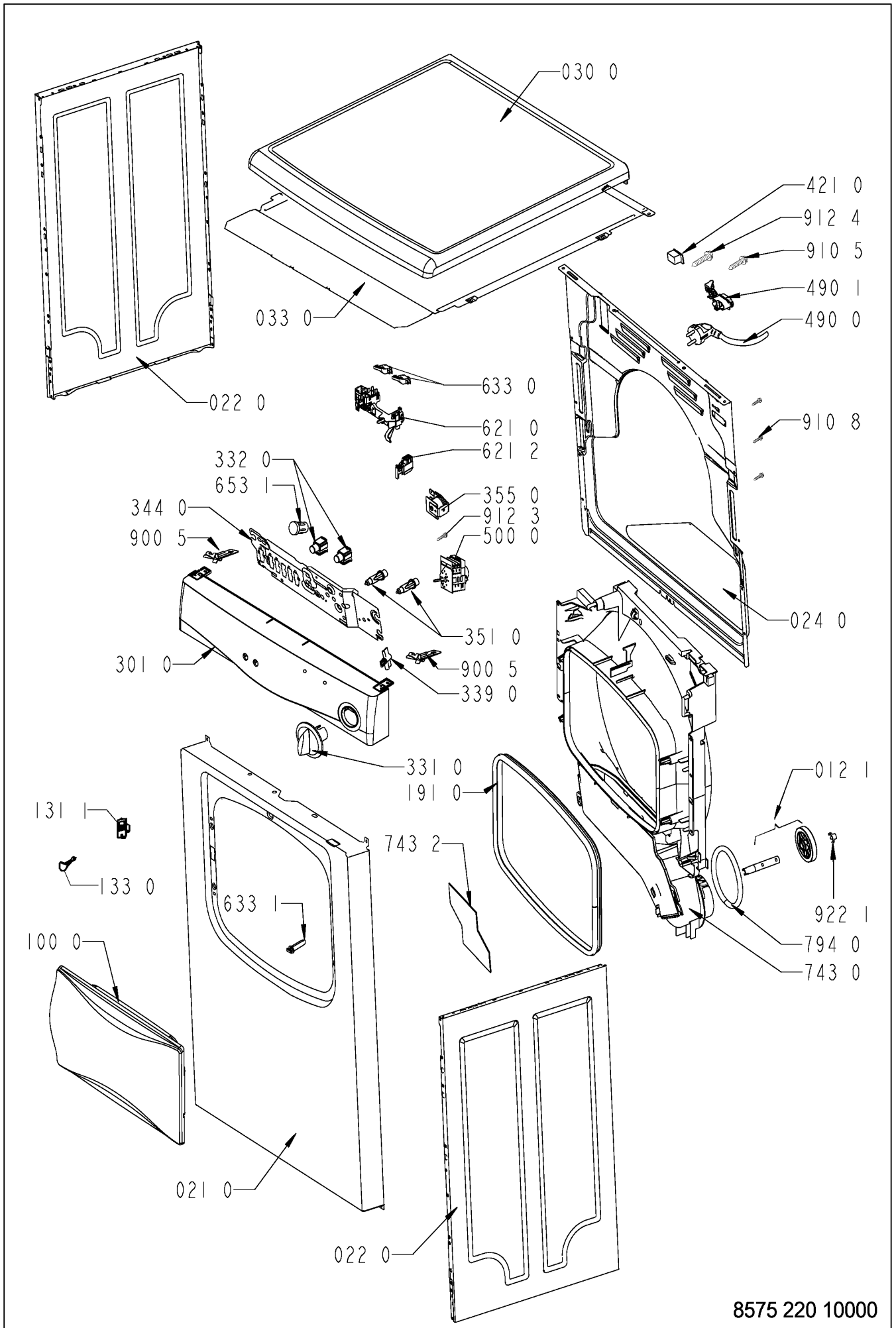
Model
Service No.
Version

AWZ 220
857522010001
857522010001

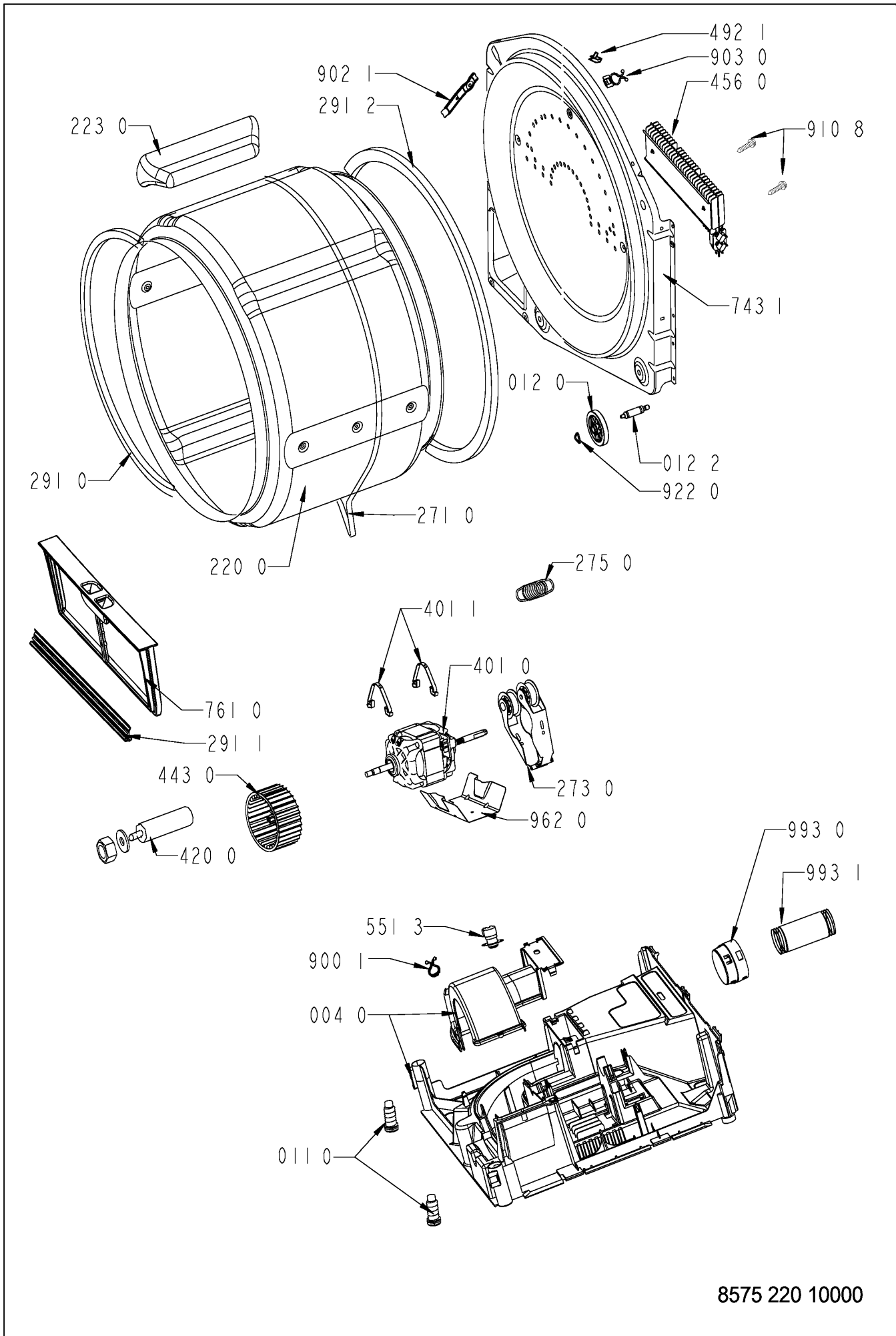
Pos. No.	12NC Code	Description
004 0	4812 440 10615	Bottom RO
011 0	4812 500 18054	Foot adjustable
012 0	4812 528 78033	Roll
012 1	4812 528 98003	Shaft Front + Roll
012 2	4812 520 28068	Shaft rear
021 0	4812 440 19387	Front,panel
022 0	4812 440 19445	Panel,side
024 0	4812 440 19467	Panel, rear from 98/34
030 0	4812 440 19779	Table top R0 VBL
033 0	4812 310 18582	Kit Push in cover
100 0	4812 416 18182	Door R0 WH VBL
131 1	4812 271 38362	Door lock
133 0	4812 417 28049	Pin Door
191 0	4812 466 68539	Gasket, door
220 0	4812 418 18177	Drum cpl.SS
223 0	4812 418 88027	Drum lifter
271 0	4812 358 18162	Belt 1965-H7 EH81
273 0	4812 358 18055	Pulley jokey
275 0	4812 492 68129	Spring
291 0	4812 466 68563	Gasket Drum front
291 1	4812 466 68541	Gasket Fluff Filter
291 2	4812 466 68562	Gasket Drum rear
301 0	4812 452 10469	Control panel AWZ 220
331 0	4812 414 58103	Knob WH AV TS
332 0	4812 276 18311	Push button
339 0	4812 413 48305	Adapter f. button
344 0	4812 464 48116	Holder
351 0	4812 134 48227	Pilot lamp
355 0	4812 280 18023	Buzzer
401 0	4812 361 18361	Motor incl.fan wheel
401 1	4812 401 18421	Clamp Motor
420 0	4812 121 18144	Capacitor 10 μ F
421 0	4812 121 18158	Interf.filter
443 0	4812 361 18292	Blower wheel
456 0	4812 259 28674	Heating element 2500W
490 0	4812 321 18087	Cable,mains
490 1	4812 321 28367	Strain relief
492 1	4812 401 18195	Clip
500 0	4812 282 18457	Timer EC4605.01 TRA
551 3	4812 271 28369	Thermostat
621 0	4812 278 18003	Switch start reset
621 2	4812 276 18278	Switch Gentle
633 0	4812 276 18248	Switch Start
633 1	4812 276 18271	Pin Start Reset
653 1	4812 047 28001	Guide,light WH VBL
743 0	4812 530 48145	Air guide
743 1	4812 530 48151	Conveyor
743 2	4812 466 68538	Seal for blower
761 0	4812 480 58077	Filter
794 0	4812 466 28107	Gasket
900 1	4812 290 88053	Clip
900 5	4812 532 28915	Clamp
902 1	4812 256 38002	Bracket Roller
903 0	4812 532 28028	Clip,fix
910 5	4819 502 38265	Screw VAB 4,5x20

Pos. No.	12NC Code	Description
910 8	4812 502 48348	Screw ST 4,2X 11
912 3	4812 502 18369	Screw A2F M4x6
912 4	4812 502 48015	Screw 4,0x16-TORX
922 0	4812 532 58005	Ring,circlip Triring
922 1	4812 532 58007	Ring,circlip
962 0	4812 466 38012	Protector Motor
993 0	4812 263 78014	Adapter
993 1	4812 310 18413	Accessory hose kit AMH 577

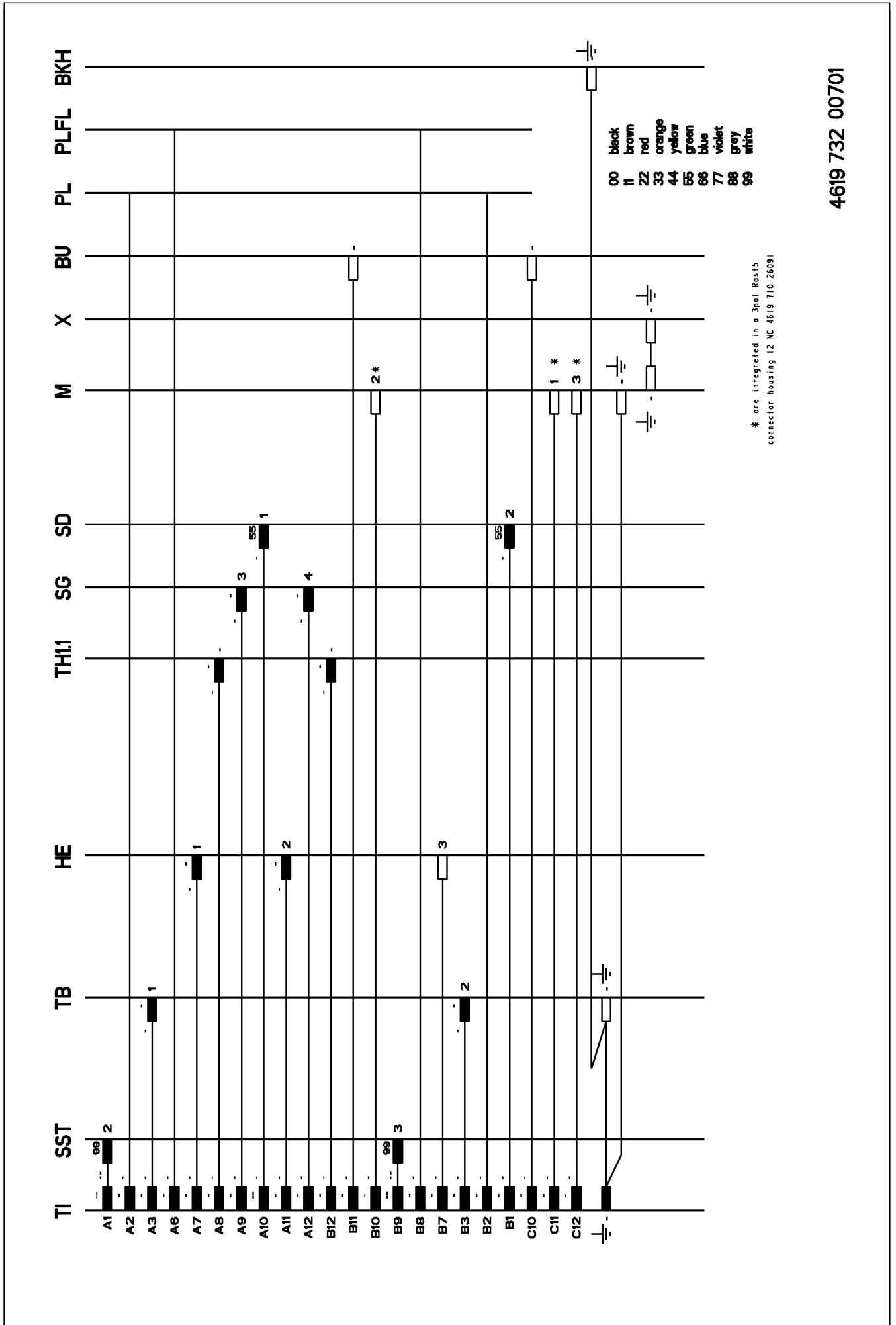
Exploded view



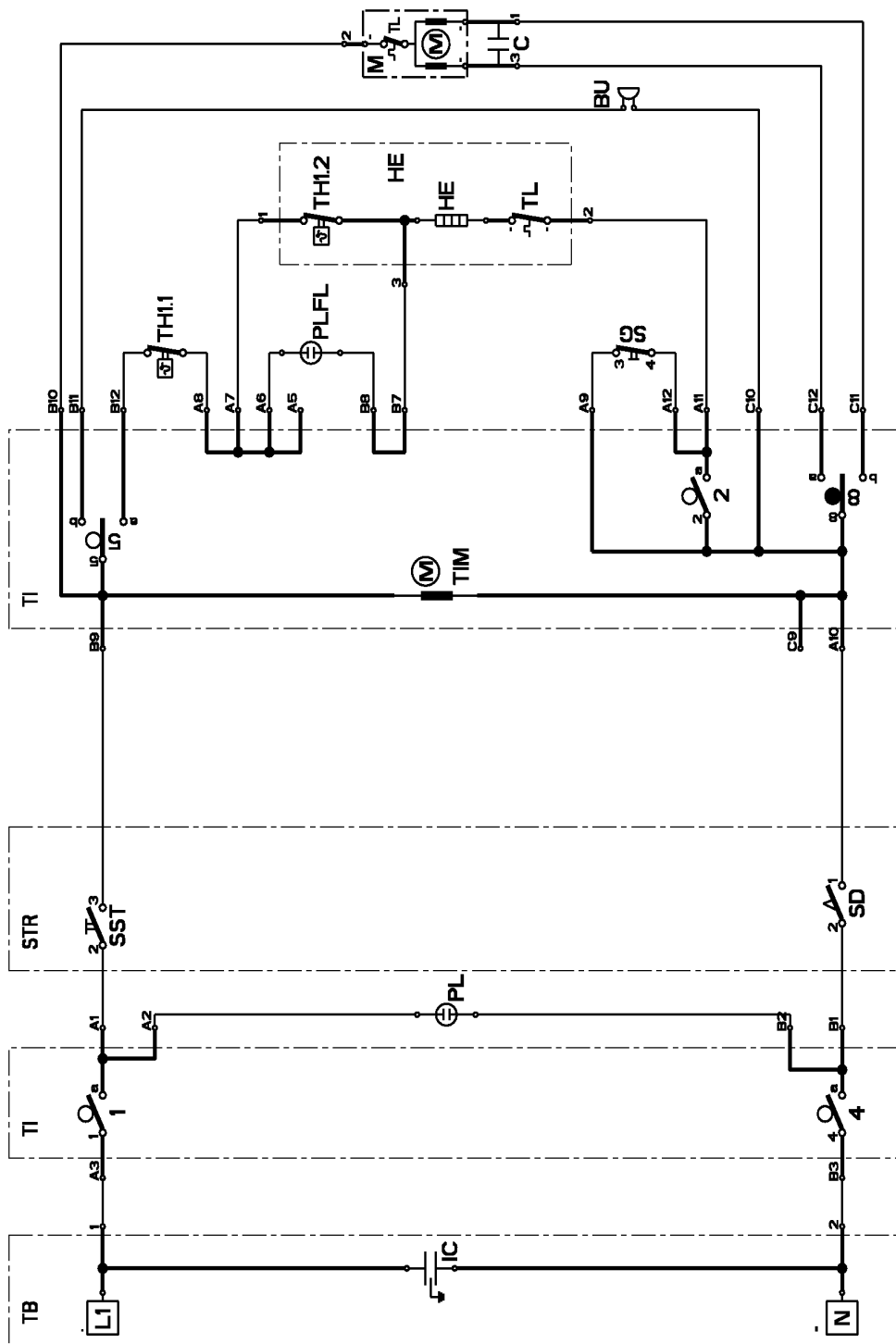
Exploded view



Wiring diagram



Circuit diagram



- BU buzzer
- C capacitor
- HE heating element
- IC interference capacitor
- M motor, drive
- PL pilot lamp, on
- PLFL pilot lamp, fluff (lint indication)
- BKH earthed bulk-head
- SD switch, door
- SG switch, gentle
- SST switch, start
- STR start reset
- TB terminal block
- TH11 thermostat fix (drum outlet)
- TH12 thermostat fix (fluff filter)
- TI timer
- TIM timer motor
- TL temp. limiter

4619 732 00701

Program diagram



4619 712 24271